

— THE —
M I D L A N D
M A N C H E S T E R
A L E O N A R D O R O Y A L H O T E L



WELCOME TO THE MIDLAND

IT'S ABOUT TIME A VENUE TREATED YOU LIKE THE MAIN EVENT

OUR EXTENSIVE AND FLEXIBLE RANGE OF MEETING ROOMS ARE THE IDEAL VENUE FOR TRAINING, RESIDENTIAL TRAINING AND SMALL MEETINGS.

SMALL MEETINGS AND TRAINING FOR UP TO 120 PEOPLE

The Midland has ten rooms suitable for small to medium sized meetings and training.

All of our training and syndicate rooms are equipped with LCD projectors and screens that can be connected to a laptop or portable device.

Featuring state of the art equipment as well as our dedicated team who are at your service, these rooms can be set up as U-shape, Cabaret, Boardroom, Classroom or Theatre style.



WHAT WE OFFER

HERE AT THE MIDLAND, WE PROVIDE THE SPACE, STYLE AND ATTENTION TO DETAIL THAT YOU WANT AND EXPECT.

Our dedicated Meetings team will ensure your event runs smoothly and our main function room have the benefit of being on the ground floor.

OUR MEETING AND EVENT ROOMS INCLUDE AS STANDARD:

- Air conditioning
- High speed WiFi
- Natural daylight in select rooms
- Flexible space

Supported by our dedicated team who will ensure your meeting or event is a success.

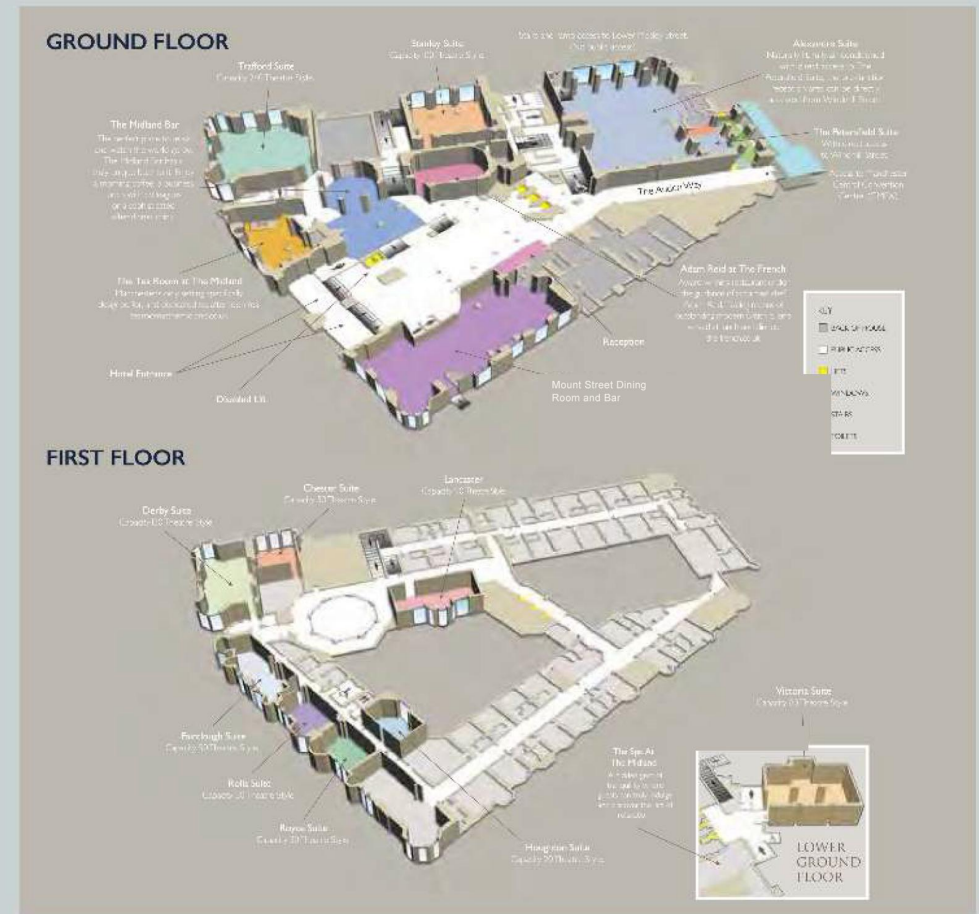
LOCATION

The hotel boasts a fantastic location in the heart of Manchester; within close proximity to all of the major train and bus stations.

The hotel is easily accessible from the A57 motorway and Manchester Airport is just 15 minutes by car.

LOCATION HIGHLIGHTS

- 1.3 miles from the A57 motorway
- 7 minute walk from Oxford Road Train Station
- 15 minute walk from Piccadilly Train Station
- 10 miles from Manchester Airport



CAPACITIES AND DIMENSIONS

| Meeting Room Name | Room Size (LxW) | Theatre | Classroom | Cabaret | Banquet | Boardroom | U-Shape | Dinner Dance | Reception |
|-------------------|-----------------|---------|-----------|---------|---------|-----------|---------|--------------|-----------|
| Alexandra Suite | 29.61 x 23.52 | 700 | 350 | 400 | 620 | 120 | 100 | 560 | 700 |
| Stanley Suite | 13.82 x 13.11 | 100 | 50 | 60 | 100 | 40 | 30 | 90 | 150 |
| Trafford Suite | 15.84 x 15.54 | 240 | 70 | 120 | 220 | 50 | 30 | 160 | 300 |
| Derby Suite | 16.1 x 7.1 | 130 | 70 | 80 | 100 | 44 | 40 | - | 150 |
| Chester Suite | 8 x 7.52 | 50 | 30 | 30 | 40 | 24 | 24 | - | 70 |
| Lancaster Suite | 13.41 x 5.6 | 80 | 40 | 50 | 60 | 34 | 25 | 50 | 80 |
| Fairclough Suite | 11.81 x 5.3 | 40 | 20 | 40 | 40 | 24 | 16 | 40 | 60 |
| Houghton Suite | 7.95 x 4.52 | 20 | 10 | - | 20 | 12 | 13 | - | - |
| Rolls Suite | 9.05 x 4.9 | 30 | 18 | 30 | 30 | 20 | 15 | 24 | 30 |
| Royce Suite | 9.05 x 4.9 | 30 | 18 | 30 | 30 | 20 | 15 | 24 | 30 |
| Victoria Suite | 13.02 x 10 | 50 | 50 | 50 | 80 | 34 | 30 | - | - |



ACCOMMODATION AND LEISURE

COMBINING THE MIDLAND'S SIGNATURE
CHARM WITH MODERN STYLE,
THIS IS YOUR MORNING SANCTUARY
AND EVENING SERENITY.

Our guest rooms are designed with comfort and convenience in mind, providing a place to unwind or to catch up on work.

All of our bedrooms are unique and are equipped with comfortable beds, crisp white linens, a large work desk, 40" HD TVs, complimentary WiFi and spacious ensuite bathroom with spa toiletries.

We also offer a number of Executive bedrooms and suites, where you can enjoy an extra spacious rooms with extra amenities.





AT A GLANCE

- 312 elegant guest rooms bedrooms including seven deluxe suites
- 14 state of the art conference and event rooms
- Adam Reid at The French – Four AA Rosette winning restaurant.
- Mount Street Dining Room and Bar
- The Midland Bar
- The Tea Room at The Midland
- The Spa at the Midland – an award winning Spa
- State of the art Gym
- Valet parking available





For Conference and Event enquiries

Tel: +44 (0)161 932 4090 Email: events@themidlandmanchester.co.uk

The Midland Manchester

16 Peter Street, Manchester M60 2DS

Tel: +44 (0)161 236 333 Email: enquiries@themidlandmanchester.co.uk
themidlandhotel.co.uk